

# JCD-LZ1-TY

## Zigbee Connecting Module

### User Manual

#### 01 Product Info



- Working voltage: 3V~3.6V
- Supporting protocol: 802.15.4 MAC/PHY
- Certification: CE, FCC
- Working Temperature: -10℃~55℃
- For Indoor Use only

#### 02 Application

This module equips those common RF motors with the capacity to connect to the local network, enabling them to work with nearby smart speakers and other devices. The Zigbee module can converse with various smart home platforms, including Xiaomi, Tmall, Alexa, etc.

#### 03 Installation&Connecting to Zigbee Network

##### \*Connection requirement

- Make sure the phone is connected to the Wi-Fi network.
- The Tuya Zigbee gateway device need to be added to the “Smart Life” APP first, please refer to its manual for details.

##### ① Download APP

- Search "Smart Life" in the app store or scan the following QR code

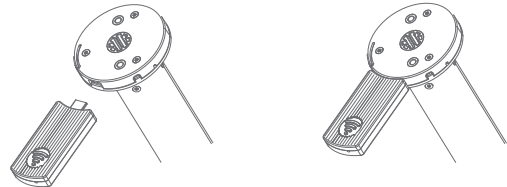


Smart Life

- Complete account registration and login to the app

##### ② Add Device

- Power on,insert module to motor head

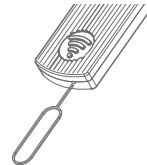


- Wait for 10s to see if the indicator is blinking



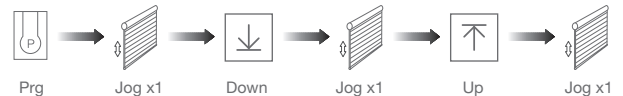
- If indicator didn't blink, pls try:

Method 1: Long insert RESET button until indicator blinking, motor's ready to Zigbee connection.

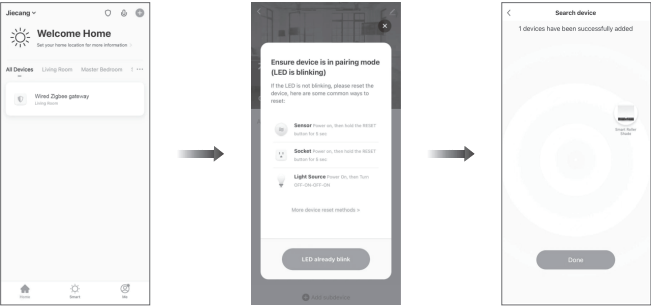


Note: You can try Method 2 if it is not easy to insert RESET on module

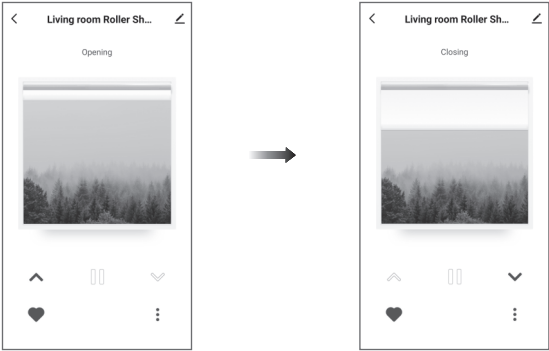
Method 2: Short Press Prg on back of controller, motor jogs once; short press Down, motor jogs once, then short press UP, motor jogs once and blue indicator blinks which means motor enters Zigbee connection status.



d.Find the added Tuya Zigbee gateway on the “Smart Life” App, click “+” to add a sub-device, and then click “LED already blink”, the APP will automatically search for motor device



g. Enter the main interface to control the operation of the roller shade.



e.After adding successfully, click “✎” to modify the device name



f. The Zigbee module indicator is always on after successful network connection.

