

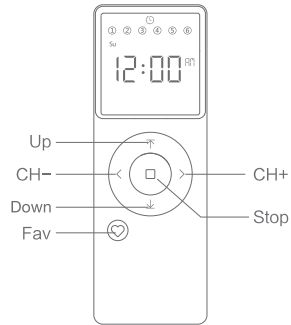
JCHR35W1B/W2B(new)

6-channel LCD remote controller with timer

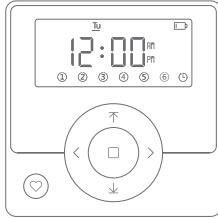
User Manual

01 Product Info

a.Front

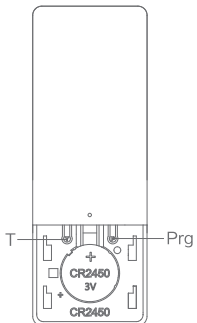


JCHR35W1B(new)
Hand-held 6-channel LCD
remote controller with timer

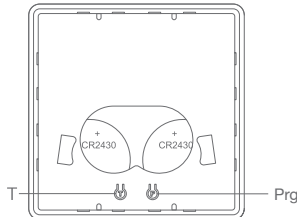


JCHR35W2B(new)
Wall-mounted 6-channel LCD
remote controller with timer

b. Back



JCHR35W1B(new)
Hand-held 6-channel LCD
remote controller with timer



JCHR35W2B(new)
Wall-mounted 6-channel LCD
remote controller with timer

02 Models & Parameters (more info please refer to the nameplate)

Electrical Specification	Standard	
Battery Type	Hand-held:CR2450*3V*1	Wall-mounted: CR2430*3V*2
Working Temperature	-10℃-50℃	
Radio Frequency	433.92M±100KHz	
Transmit Distance	>=30m indoor	

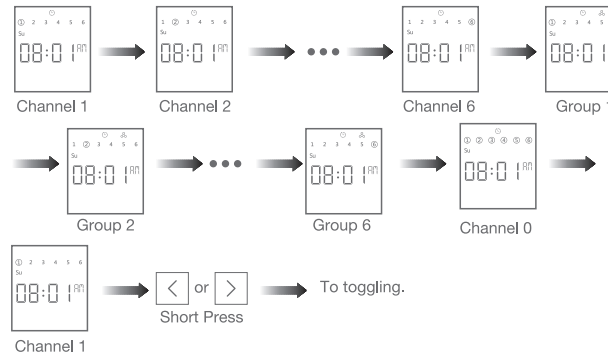
03 Caution!



1. The transmitter should not be exposed to moisture or impact, so as not to affect its life
2. During use, when the remote control distance is significantly shorter or less sensitive, please check whether the battery needs to be replaced.
3. When the battery voltage is too low, the LED screen will show a low voltage prompt, prompting to replace the battery.
4. Please properly dispose of used batteries according to the local garbage classification and recycling policy.

04 Instructions

a.Channels & Groups Toggling



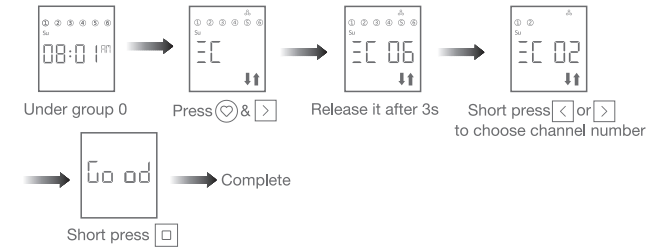
Note: Channel 0 is where all channels are shown as steady-lit.

b.Number of Channels Setting



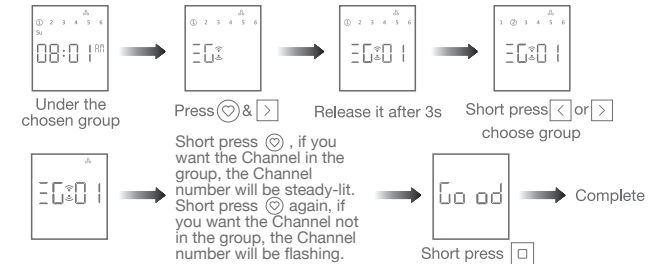
Note: Max&Min number is 6&1 when it's set under channel 1-6.

c.Number of Groups Setting



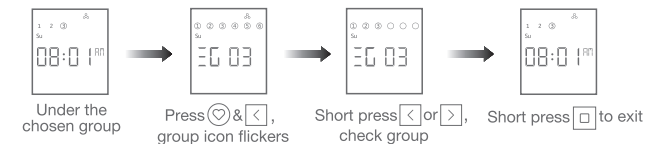
Note: Max&Min number is 6&1 when it's set under channel 0.

d.Channel in Group Setting

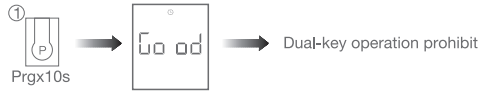


Note: Channel in groups setting is under GROUP 1-6.

e.Check the Channels in Groups



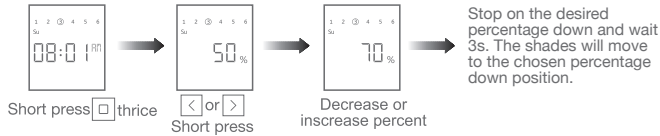
f. Prohibit Dual-key Operation



② Repeat the above, dual-key operation activated

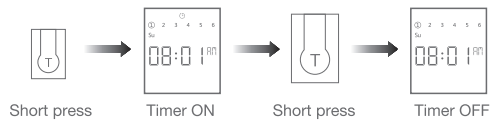
Note: When dual-key operation prohibited, these programming setting functions are not allowed.

g. Position Percent Setting

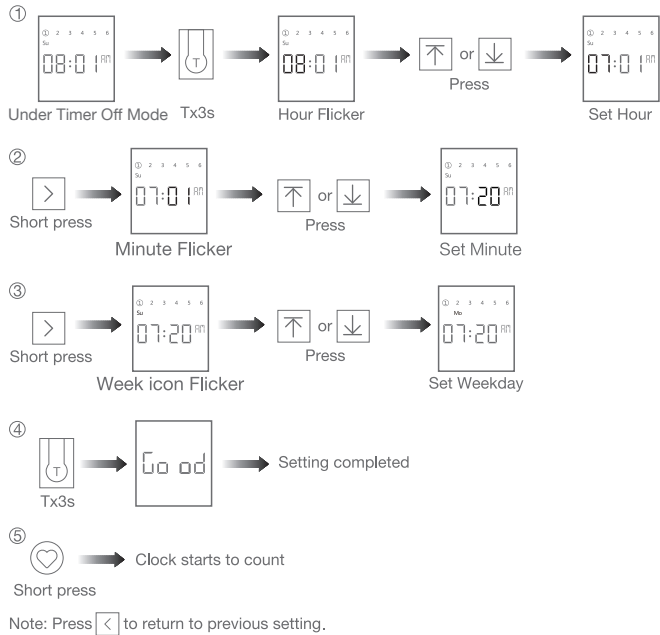


Note: All the shades under same group will run to same position after percent setting.

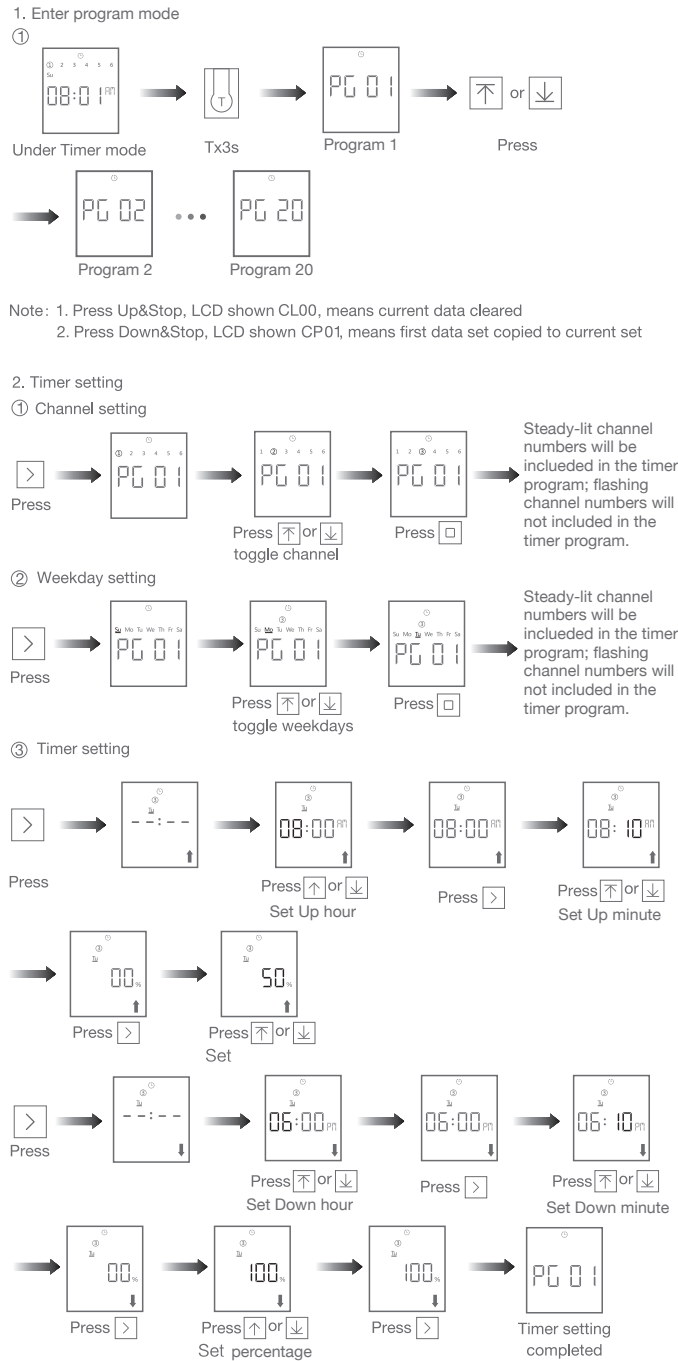
h. Timer Function On/Off



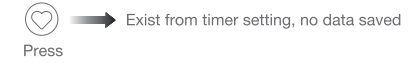
i. Local Time Setting



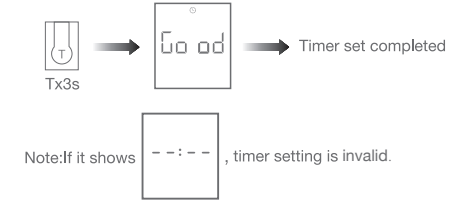
j. Timer Control



3. To exist timer setting



4. To save timer setting



k. Default Setting



l. For other operations, pls refer to the motor operation instruction