

JCHR35W1C/2C

16-channel LCD Remote Controller

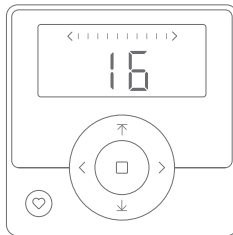
User Manual

01 Product Info



JCHR35W1C

Hand-held 16-channel LCD Remote Controller

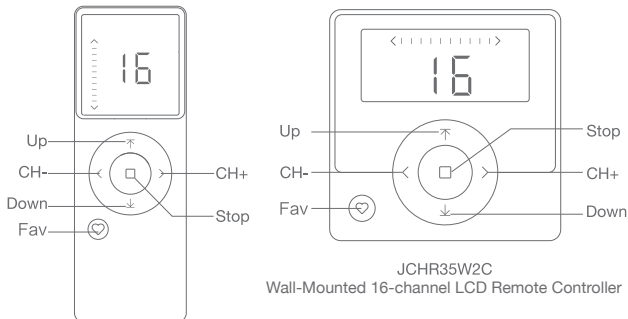


JCHR35W2C

Wall-Mounted 16-channel LCD Remote Controller

02 Buttons

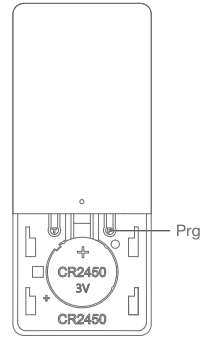
a.Front



JCHR35W1C

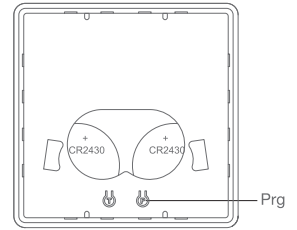
Hand-held 16-channel LCD Remote Controller

b.Back



JCHR35W1C

Hand-held 16-channel LCD Remote Controller



JCHR35W2C


Wall-Mounted 16-channel LCD Remote Controller

03 Models & Parameters (more info please refer to the nameplate)

| Electrical Specification | Standard | |
|--------------------------|-----------------------|---------------------------|
| Battery Type | Hand-held:CR2450*3V*1 | Wall-mounted: CR2430*3V*2 |
| Working Temperature | -10℃-50℃ | |
| Radio Frequency | 433.92M ± 100KHz | |
| Transmit Distance | >=30m indoor | |

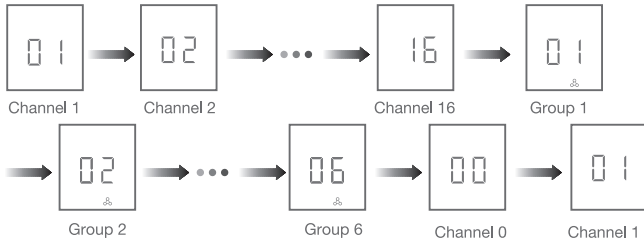
04 Caution!



- 1.The transmitter should not be exposed to moisture or impact, so as not to affect its life
- 2.During use, when the remote control distance is significantly shorter or less sensitive, please check whether the battery needs to be replaced.
- 3.When the battery voltage is too low, the LCD screen will show a low voltage prompt, prompting to replace the battery. 
- 4.Please properly dispose of used batteries according to the local garbage classification and recycling policy.

05 Instructions

a.Channels & Groups Toggling



Note: Channel 0 is the group control for all the channels.

b.Number of Channels Setting



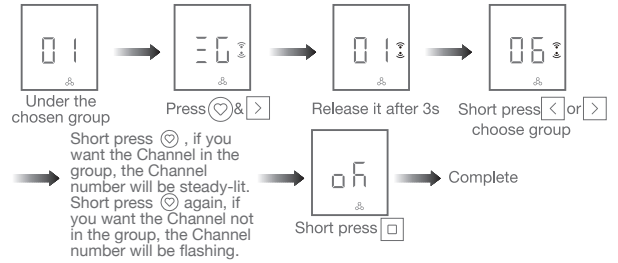
Note: Max&Min number is 16&1 when it's set under channel 1-16.

c.Number of Groups Setting



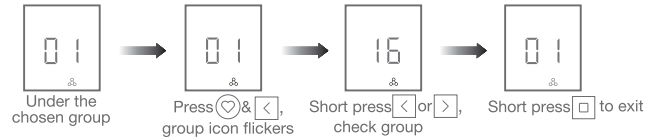
Note: Max&Min number is 6&0 when it's set under channel 0.

d.Channel in Group Setting



Note: Channel in groups setting is under GROUP 1-6.

e.Check the Channels in Groups



Note: LCD will show "EC" if there is no detailed channel.

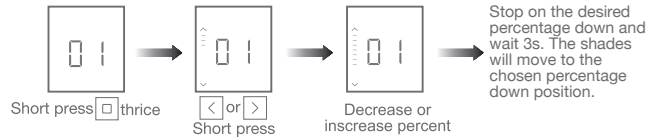
f.Prohibit Dual-key Operation



② Repeat the above, dual-key operation activated

Note: When dual-key operation prohibited, these programming setting functions are not allowed, such as limits setting.

g.Position Percent Setting



Note: All the shades under same group will run to same position after percent setting.

h.For other operations, please refer to the motor operation instruction