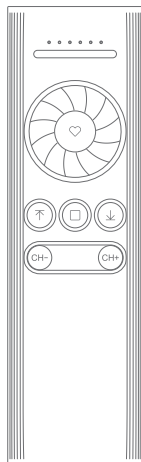


# JCHR35W7A

## Hand-held Remote with Vane Adjustment

### User Manual

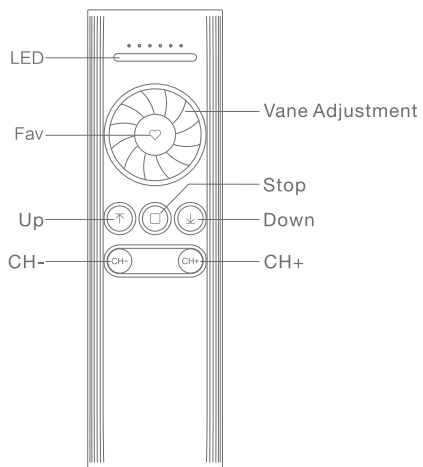
#### 01 Product Info



JCHR35W7A  
Hand-held 6-channel remote with vane adjustment

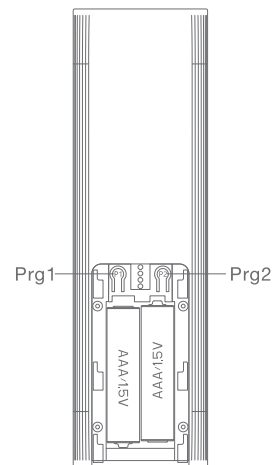
#### 02 Buttons

a.Front



JCHR35W7A  
Hand-held 6-channel remote with vane adjustment

b.Back



JCHR35W7A  
Hand-held 6-channel remote with vane adjustment

#### 03 Parameters (more info please refer to the nameplate)

Electrical Specification	Standard
Battery Type	AAA battery*2
Working Temperature	-10°C-50°C
Radio Frequency	433.92M±100KHz
Transmit Distance	>=30m indoor

#### 04 Caution!



- 1.The transmitter should not be exposed to moisture or impact, so as not to affect its life
- 2.During use, when the remote control distance is significantly shorter or less sensitive, please check whether the battery needs to be replaced.
- 3.When the battery voltage is too low, orange LED flickers when you press button, indicating to replace battery.
- 4.Pls properly dispose of used batteries according to the local garbage classification and recycling policy.

## 05 Instructions

### a. Child-lock (Prohibit dual-key operation)

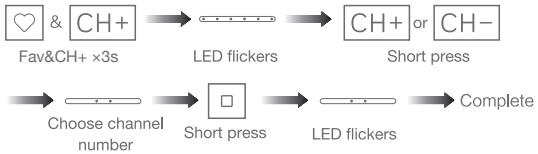
①



② Repeat above step, dual-key operation activated

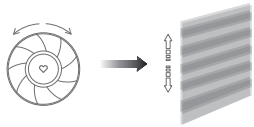
Note: When dual-key operation prohibited, these programming setting functions are not allowed: such as limits setting.

### b. Number of Channels Setting



Note: When all LEDs are lit, that is channel 0 (All channels move together).

### c. Vane Adjustment



Scroll 1 notch: vanes go up or down 1 notch, lighting and heating changed per variator notch

Scroll n notches: raise or lower the vanes by n steps, vary the lighting and heating by n steps.

### d. For other operations, pls refer to the motor operation instruction